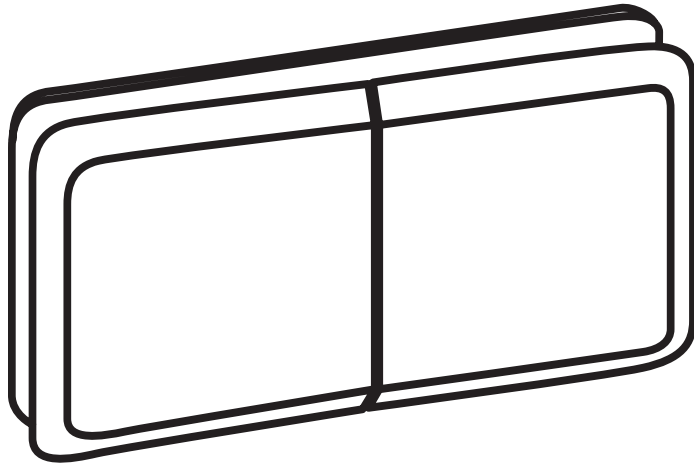


SIGNATURE SERIES 980 180° GTG CLAMP



SPECIFICATIONS

For 5/16" (8 mm) to 1/2" (12 mm) glass
Forged Solid Brass Construction
4" (102mm) wide x 2" (51mm) high
180 Deg. Glass to Glass

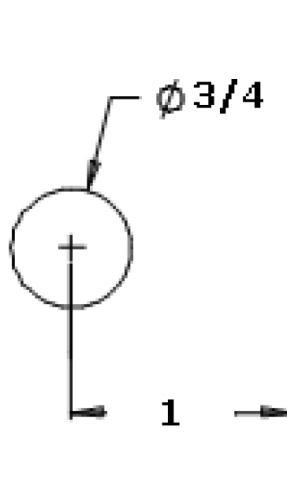
CAUTION

For public safety, we recommend only using tempered or safety glass in accordance with local building codes.

Power tools should not be used to compress the clamp on the glass.



SIGNATURE SERIES 980 180° GTG CLAMP



IMPORTANT: Project measurements from the edge of the glass.